



RANGIORA HIGH SCHOOL

STRATEGIC PLAN 2023-25

ANNUAL PLAN 2024

LEARNER PROFILE
We support each and every learner to develop the knowledge, values and skills to successfully navigate the future.
At the forefront of the learner profile are four key elements:

- Engaged
- Confident
- Integrity
- Lifelong learner

VISION
Ākonga thriving in a centre of learning excellence that acknowledges the past, and focuses on their future; connecting ākonga to community, enabling them to contribute positively as lifelong learners.



MISSION

- Ākonga deeply engaged in the process of learning, experiencing success through learning focused relationships and culturally responsive teaching practices.
- A dynamic curriculum delivered through relevant and responsive learning programmes that are inclusive and equitable with clear pathways to future learning, training and employment.
- Ākonga will use the knowledge, values, skills and dispositions to become active members of the community, contributing to and successfully navigating the future.

VALUES
Aspire (Wawatahia):
Aspiring to achieve your best.
Respect (Whakautea):
Respect yourself, others and the environment.
Contribute (Tohaina):
Actively contribute to the community.



STRATEGIC DIRECTION 2023-2025

CORE FOCUS

This is the centre pillar, we need to know our students on an individual basis. Step one is to track our students to find those who are at risk or need support. We then place a mentoring programme to sit alongside them. We guide our students through feedback and feedforward. Finally, we inform our students and caregivers through regular reporting that is easy to access and informs of next steps rather than outcomes.

2024 School Mantra:
KNOW ME GUIDE ME



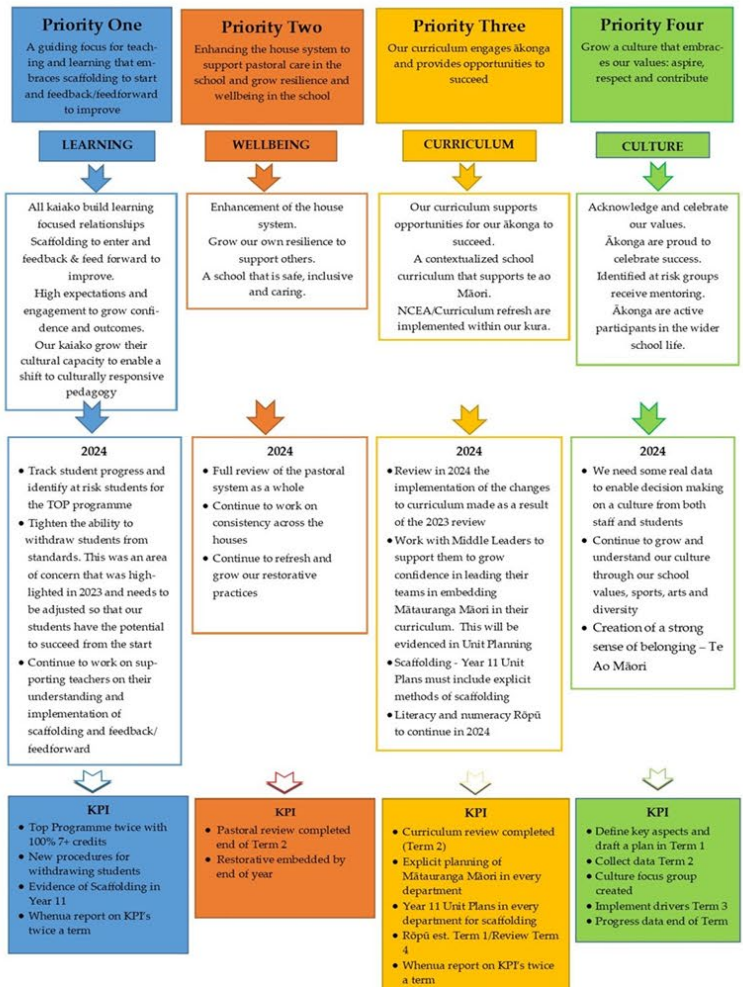
STRATEGIC FOCUS

These are the wrap around strategies to ensure the core is maintained. Knowing our students sits on the left and deals with wellbeing and culture. Guiding sits on the right and deals with learning and curriculum. The larger writing (e.g. Values) is the annual focus. The smaller writing is the Tier One business as usual (e.g. Celebration).

2024 Annual Targets:

- Target One:**
Learning focused relationships
- Target Two:**
Enhancing the house system
- Target 3:**
Opportunity supported curriculum
- Target 4:**
Creation of a strong sense of belonging

ANNUAL TARGETS 2024



KEY STRATEGIC DATA 2023-2025

